

**Paul Yaffe's  
Bagger  
Nation™**

# **LIGHTNING BULLET** ⚡

**PRO MOUNTS**



**INSTALL  
INSTRUCTIONS**



**PAUL YAFFE ORIGINALS**  
DESIGN & DEVELOPMENT



1. Remove fuel tank and access front wiring caddy as per service manual. Disconnect T/S connector, access terminals and remove as per tip sheet provided. (See Page 4)
2. Remove stock turn signals.
3. Remove mirrors Do not reuse star washer on mirror. Use provided star washer between control & Pro Mount in the counter bore pocket.



4. Apply a small amount of loctite 242 to end of threads on mirror and install mirror and bullet with mount & tighten.
5. Position bullet straight forward route wires through eyelets with handlebar control wires.
6. Ziptie light ribbon to control wires and route back to caddy.
7. At this time do a turn check and make sure wiring does not bind or pinch.



8. Adjust accordingly. Determine length of wiring at caddy. Cut ribbon to length. Separate ribbon wire to 1 1/2", then strip insulation back 5/16". This allows a double crimp of the wire in the terminal. Then place terminal into connector using placement tip sheet. Secure secondary lock. Reinstall connector into receptical. Check routing of wires so they cannot be pinched or stretched.
9. Close Caddy.
10. Check lighting operation before reinstalling tank reinstall fuel tank, etc.

Enjoy your new badass bullets!



PAUL YAFFE ORIGINALS  
DESIGN & DEVELOPMENT

## TYCO 070 MULTILOCK UNSEALED CONNECTOR REPAIR

PART NUMBER	TOOL NAME
B-50085	TERMINAL EXTRACTOR
HD-41609	AMP MULTI-LOCK CRIMPER

### GENERAL

Tyco 070 Multilock Unsealed connectors are found between wire harnesses and component wiring. They are either floating or anchored to the frame with attachment clips.

See Figure A-63. Attachment Clips (1) on the pin housings are fitted to T-studs on motorcycle frame. The T-studs identify OE connector locations. To maintain serviceability, always return connectors to OE locations after service.

Obtain the necessary tools to repair the connector and terminals.

### NOTE

*Use the AMP MULTI-LOCK CRIMPER (Part No. HD-41609) for terminal crimping.*

### SEPARATING PIN AND SOCKET HOUSINGS

1. If necessary, slide connector attachment clip so T-stud is in the large end of the clip opening. Remove connector from T-stud.
2. See Figure A-63. Press the release button (2) on the socket terminal side of the connector.
3. Pull the socket housing (3) out of the pin housing (4).

### MATING PIN AND SOCKET HOUSING

1. Hold the Housings to match wire color to wire color.
2. Insert the socket housing into the pin housing until it clicks in place.
3. If OE location is a T-stud, fit large opening end of attachment clip over T-stud. Slide connector to engage T-stud to small end of opening in clip.

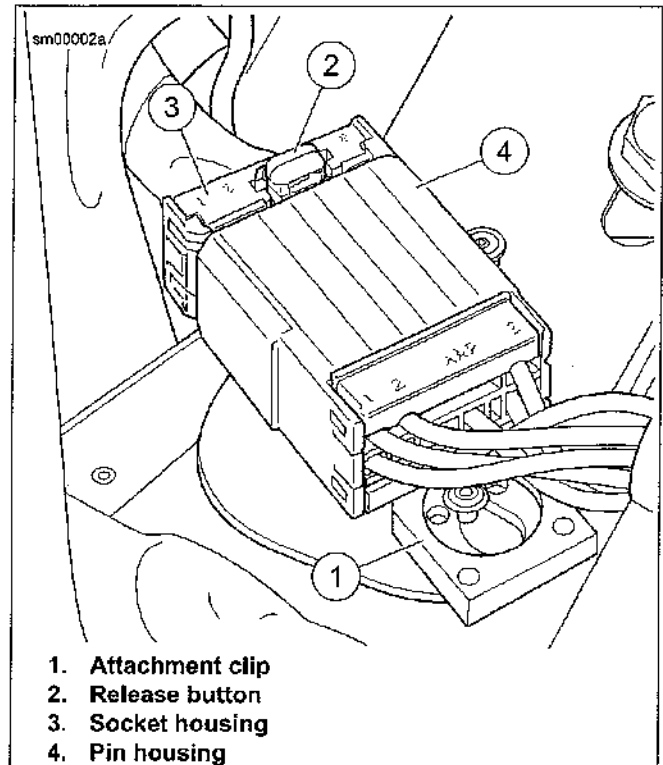


Figure A-63. Tyco 070 Multilock Unsealed Connector

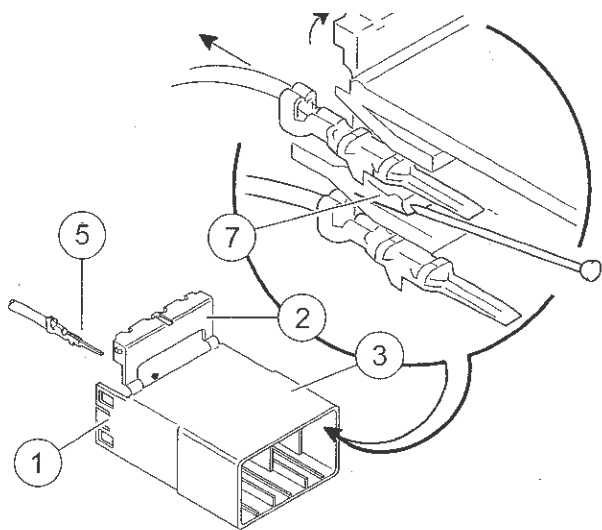
### REMOVING TERMINALS FROM HOUSING

1. See Figure A-64. Bend back the latch (1) to free one end of secondary lock (2) then repeat on the opposite end. Hinge the secondary lock outward.
2. Look in the terminal side of the connector (opposite the secondary lock) and note the cavity next to each terminal.
3. Using TERMINAL EXTRACTOR (Part No. B-50085), press the tang in the housing to release the terminal.
  - a. Socket: Lift the socket tang (8) up.
  - b. Pin: Press the pin tang (7) down.

### NOTE

*If the tang is released, a click is heard.*

4. Gently tug on wire to pull wire and terminal from cavity.



1. Latch
2. Secondary lock open
3. Pin housing
4. Socket housing
5. Pin terminal
6. Socket terminal
7. Tang (pin)
8. Tang (socket)

Figure A-64. Tyco 070 Multilock Unsealed Connector:  
Socket and Pin Housings

## INSERTING TERMINALS INTO HOUSING

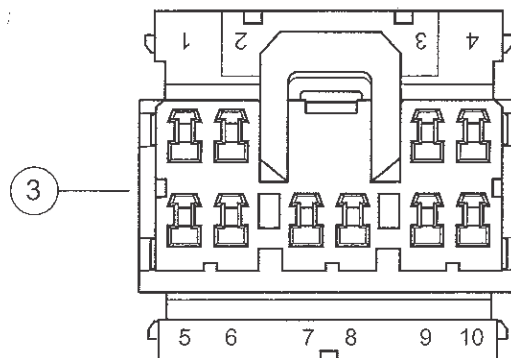
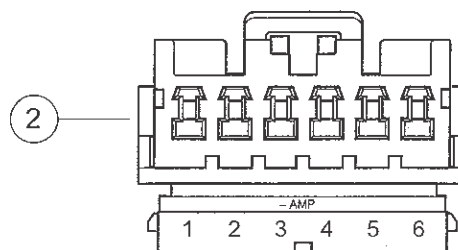
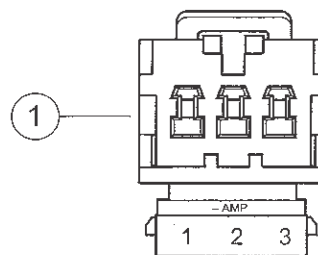
### NOTE

Use the AMP MULTI-LOCK CRIMPER (Part No. HD-41609) for terminal crimping.

1. Hold the terminal so the catch faces the tang in the chamber. Insert the terminal into its numbered cavity until it snaps in place.

- On the pin side of the connector, tangs are positioned at the bottom of each cavity. Therefore, the slot in the pin terminal (on the side opposite the crimp tails) must face downward.
  - On the socket side, tangs are at the top of each cavity. Therefore the socket terminal slot (on the same side as the crimp tails) must face upward.
2. Gently tug on wire ends to verify that all terminals are locked.
  3. Rotate the hinged secondary lock inward until tabs fully engage latches on both sides of connector.

sm00005



1. 3-place housing
2. 6-place housing
3. 10-place housing

Figure A-65. Tyco 070 Multilock Unsealed Connector:  
Cavity Numbers on Secondary Locks (socket housings shown)



**LIGHTNING BULLET** ⚡  
SUPER BRIGHT LED'S

**Paul Yaffe's  
Bagger  
Nation™**

602.840.4205  
BAGGERNATION.COM