

Paul Yaffe's **Bagger Nation**™

Wiring Instructions for Snake Eye, Snake Eye Delux and Middle Finger LED Lights

2014 – Later Harley-Davidson Touring Models



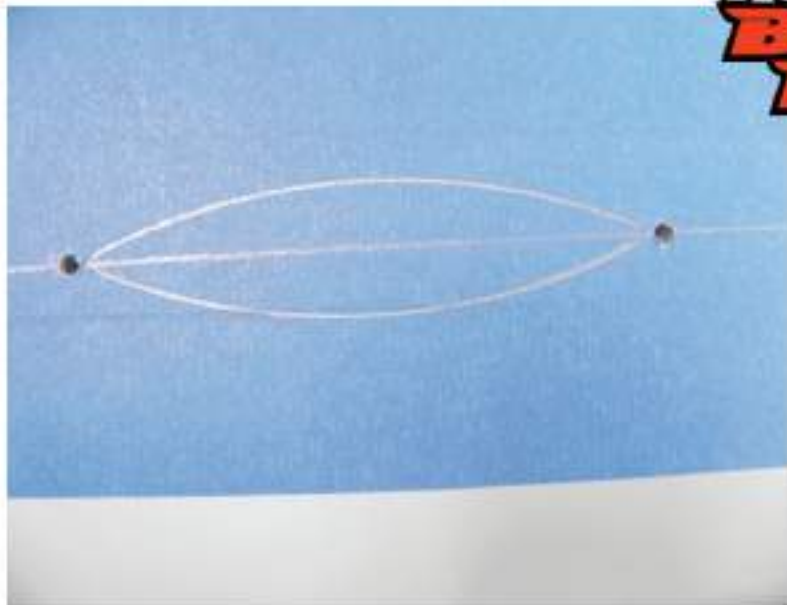


Congratulations! You have just purchased the baddest taillights available! Please read these instructions before beginning your installation.

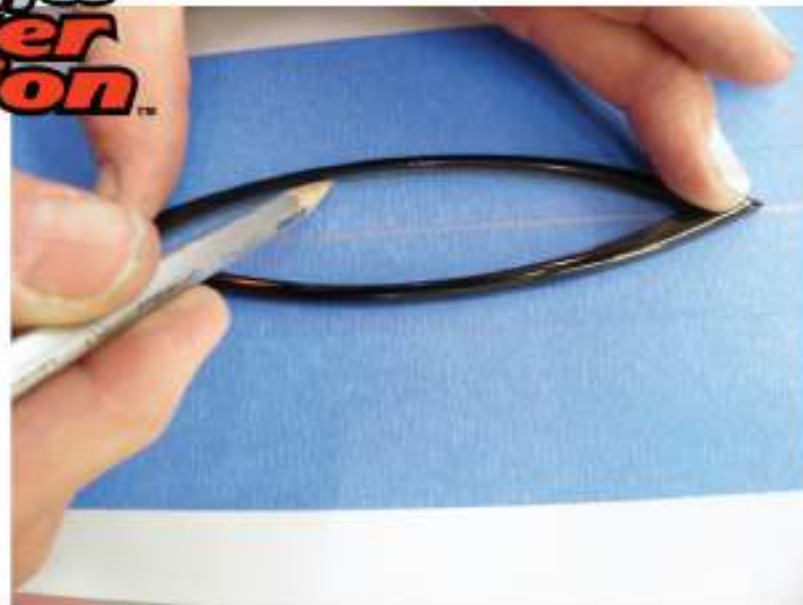
1. On a clean, dry surface stick the EZ Light templates where you intend on installing your new taillights.
2. The templates are marked with hole sizes for drilling. We recommend drilling a small pilot hole first to avoid drill bit walk and then drilling the final hole size in a second operation.
3. Once all holes are drilled you will cut along the lens opening lines to connect the 5/8" holes forming an oval opening as outlined on the template. We recommend cutting along the INSIDE of the line and then filing the opening to size.
4. Notice that each of the EZ LED boxes has a beveled or angled side. Those angled sides should face each other to avoid interference when installing the EZ Lights on an arched surface such as our Chupa or Super Stretch fenders. Install the set screws (mounting posts) with the Allen side facing out using red Loctite and tighten snug. Lay the red lenses in the EZ Light bezels and install the bezels on the fender sliding the posts through the holes. Slide the EZ LED boxes over the posts with beveled edge facing each other and using locknuts provided snug each nut alternating from nut to nut until all are tight like you would install lug nuts on a car.

Note: When installing set screws do not overtighten you will damage the bezel. Hand tighten and use red Loctite only.

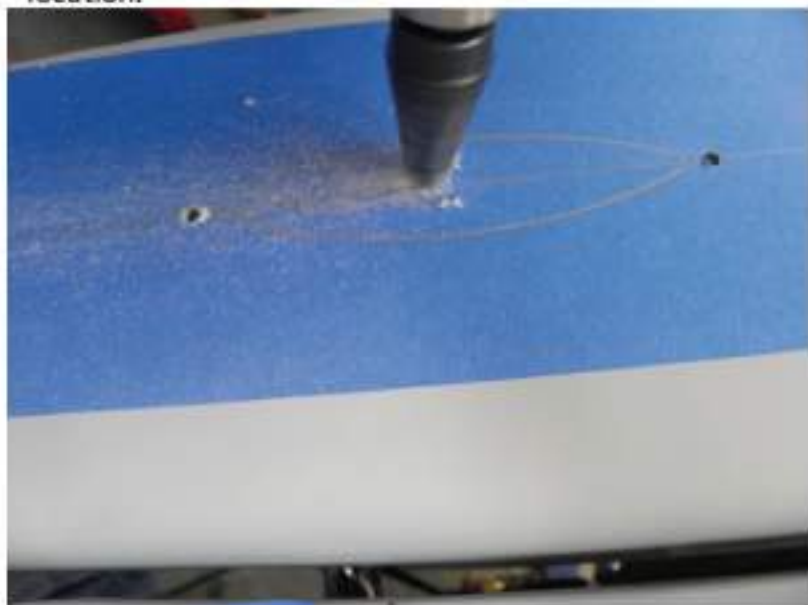
5. That's it for the install part! Please refer to our EZ Light wiring diagram for wiring values...
Thanks for choosing Paul Yaffe's Bagger Nation. Now go out and show of your bitchin' taillights and tell everyone where you got them!



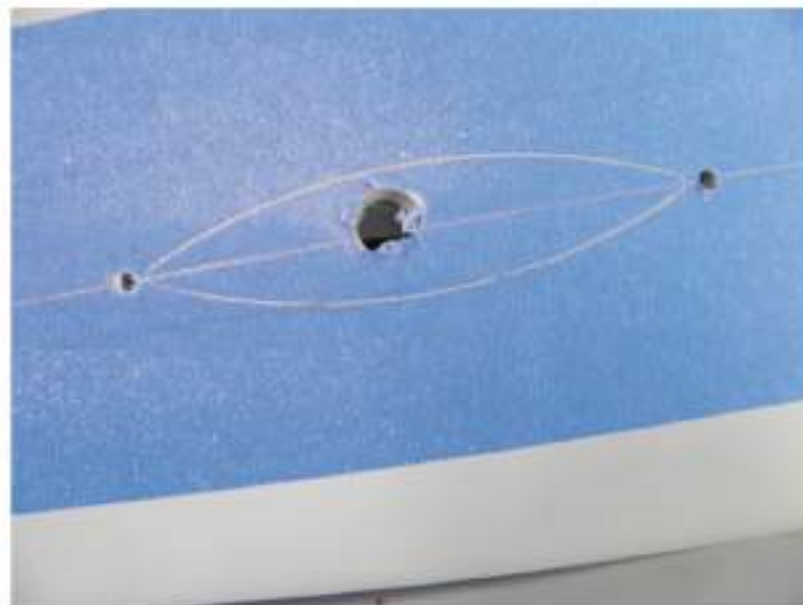
1. Choose your light location and tape off the surface where you're going to drill and cut to protect the surface. Place the EZ Light bezel in your desired location.



2. Trace the inside bezel and mark the two mounting hole locations. Drill the two mounting holes.



3. Drill a large pilot hole in the center of the area to be removed.



4. This is where you will start your cut.



5. Using a reciprocating saw cut along the inside of the inner bezel area that you marked.



6. Our bezel is thin so make sure you cut to the inside of your line and then file the final shape.



7. Bevel the edge back so you can't see the thick wall of the fender or bag through the lens once installed.



8. Double-check your fitment and cut.



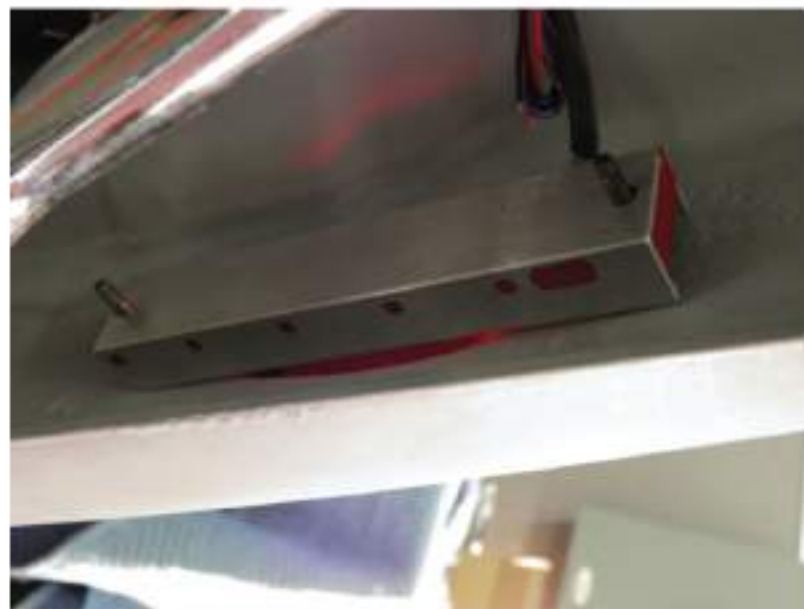
9. Your lights should look like this



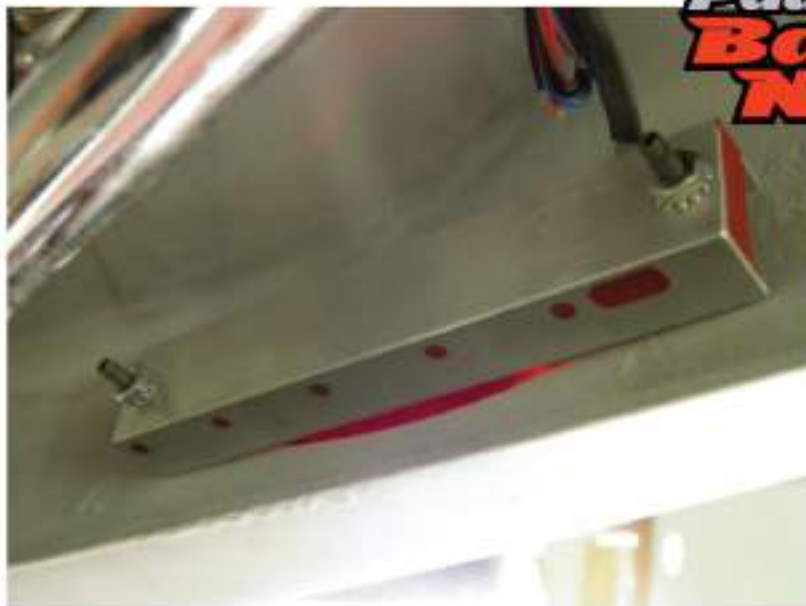
10. Slide the bezel with the set screws installed through the fender / bag and then slide the light box over the two studs and secure it with the two nuts provided.



11. Ready to get secured.



12. Use blue Loctite on the nuts and don't over torque them...snug will do.



13. Ready to be wired.



14. The bezel can flex slightly to adjust to the curved surface



15. BAM!! Killer brake lights



16. Running lights



17. Turn Signal / Brake Light



Wiring Connections for Snake Eye, Snake Eye Delux and Middle Finger EZ LEDs taillights

Connect BLUE wire to output of running light circuit.

Connect RED wire to output of left or right turn signal circuit.

Connect BLACK wire to GROUND.

Note: DO NOT use white wire of light and DO NOT use the brake circuit of motorcycle. You MUST flash the BCM (Body Control Module) for CVO lights out. See your H-D Digital Tech.

Note: Flashing of BCM will use turn signal circuit for turn signal and brake light functions

Description of Operation

Running Lights:

Applying +12VDC to Blue wire will turn on all LEDs to medium intensity.

Brake Lights:

Applying +12VDC to RED wire when brakes are applied to assure visibility and safety.

If you're installing the EZ Lights in your saddlebags we recommend our Bag Light Install Kit which makes wiring the lights easier and allows a quick disconnect function for easy saddlebag removal. We also recommend the use of a Load Equalizer for your specific model bike.



We recommend use of Bag Light Install Kit and Load Equalizer (if applicable) with these lights:

P/N PYO:BLIK-14L (2014-Later)

P/N PYO:BLIK-10 (2010-2013) & PYO:LE-03-SR (Load Equalizer)

P/N PYO:BLIK (Standard Models)

P/N PYO:BLIK-CVO (2009-2013 CVO) & PYO:LE-03-SRCVO (Load Equalizer)

BLIK Wiring

Black – Ground
Blue - Tail Lamp
Red/Yellow – Brake
Brown - Right Turn
Violet - Left Turn

Light Wiring

Black
Blue
Red
White (Not Used)
White (Not Used)

Stock Wiring

Black
Blue
Blue/Red
Blue/Brown
Blue/Violet
Red/Yellow (Not Used)