

**Paul Yaffe's
Bagger
Nation™**



**FOR HARLEY-DAVIDSON
TOURING BIKES**

**EZ, WEDGY, SUPER BRIGHT LED
& COB (CHIP ON BOARD)
LED LIGHTNING BOLT
INSTALL
INSTRUCTIONS & TIPS**



PAUL YAFFE ORIGINALS
DESIGN & DEVELOPMENT



EZ LED Snake Eye Lights



EZ LED Delux Lights



EZ LED Middle Finger Lights



Bagger Dagger LEDs

Premium Wedgy Lights



Light Install Kit

2013 & Earlier Load Equalizers



Turn Signals for Road Glides 2013-Earlier



Super Bright LEDs



Lightning Bolts CoB LEDs

THANK YOU FOR YOUR INTEREST IN OUR BAGGER NATION LIGHTING!

We have assembled the baddest taillights available! Please read these instructions before beginning your installation.

LET'S GET STARTED



LIGHTNING BOLTS



For Lightning Bolts: simply drill a 7/16" hole, bolt them in and wire them up! The beveled edge can cover any mishaps in the drilling process. Again... Measure twice cut once! That's IT!

SUPER BRIGHT LED LIGHTS



For Super Bright LEDs: drill a pilot hole, then come back with a sharp 7/32" drill bit, and drill out the final hole size. Use touch up paint inside the hole, once dry, silicone your new Super Brights in place, and wire them up! Remember... Measure twice cut once!

WEDGY LED LIGHTS

Premium Wedgy Lights



For Wedgy Lights: You can use your French kit as an outline to trace where you are putting your lights. Make any adjustments to the French box or shape you need to ensure your French kit allows the Wedgy Light will sit cleanly in the body and be even then use panel bond adhesive to mount the French kit into your modification. The holes around the perimeter of the French box are there to grab on to the panel bond. Measure twice cut once!

SUPER BRIGHT LED LIGHTS



EZ LED
Snake Eye
Lights



EZ LED
Delux
Lights



EZ LED
Middle Finger
Lights



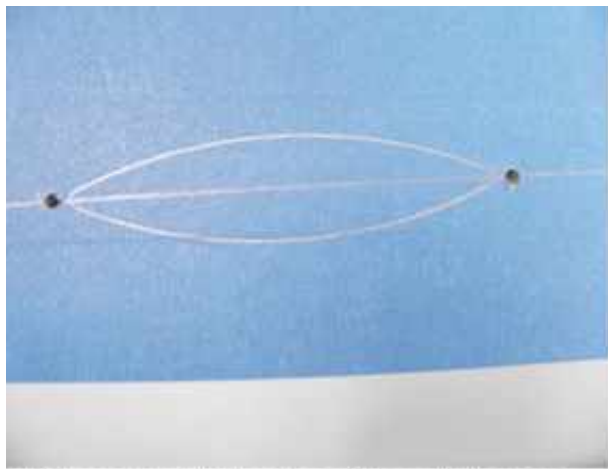
Bagger Dagger
LEDs

For EZ Lights, & Bagger Dagger Lights: Plot out where you intend on installing your new taillights. Use your step by step instructions below, in either situation cut along the **INSIDE** of the line. Measure twice cut once!

Note: EZ LED lightboxes (Lego Lights) have a beveled or angled edges, these sides should face each other to avoid interference when installing the EZ Lights on an arched surface such as our Swoop or Super Stretch fenders.

Install the set screws (mounting posts) with the Allen side facing out using a tiny dab of red Loctite and tighten snug (**DO NOT OVERTIGHTEN**). Snug each nut, alternating from nut to nut until all are tight, much like you would install lug nuts on a car.

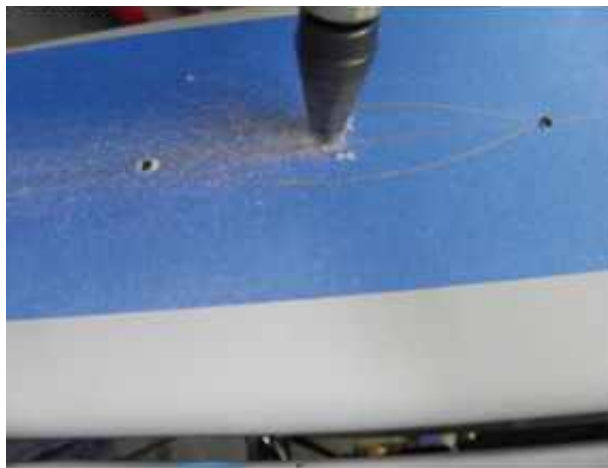
**Paul Yaffe's
Bagger
Nation™**



1. Choose your light location and tape off the surface where you're going to drill and cut to protect the surface. Place the EZ Light bezel in your desired location.

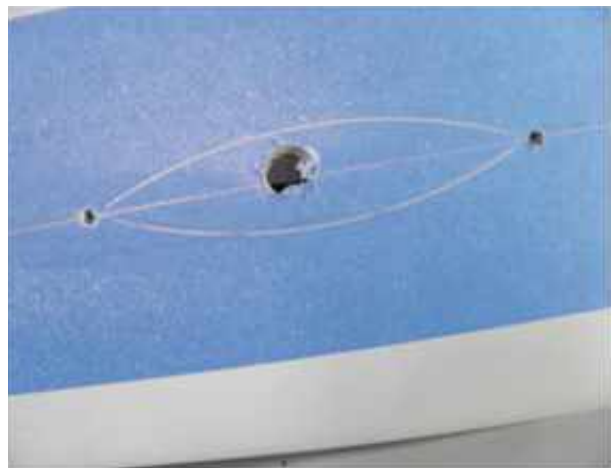


2. Trace the inside bezel and mark the two mounting hole locations. Drill the two mounting holes.



2. Drill a large pilot hole in the center of the area to be removed.

**Paul Yaffe's
Bagger
Nation**



4. This is where you will start your cut.



5. Using a reciprocating saw cut along the inside of the inner bezel area that you marked.



6. Our bezel is thin so make sure you cut to the inside of your line and then file the final shape.



7. Bevel the edge back so you can't see the thick wall of the fender or bag through the lens once installed.



8. Double-check your fitment and cut.



9. Your lights should look like this.

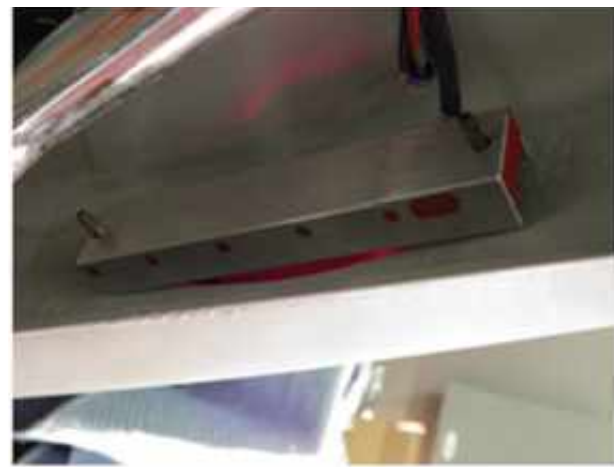
**Paul Yaffe's
Bagger
Nation**



10. Slide the bezel with the set screws installed through the fender/bag and then slide the light box over the two studs and secure it with the two nuts provide.



11. Ready to get secured.



12. Use blue loctite on the nuts and don't overtorgue them...snug will do.



13. Ready to be wired.



14. The bezel can flex slightly to adjust to the curved surface.



15. BAM!! Killer brake lights.

**Paul Yaffe's
Bagger
Nation**



16. Running lights.



17. Turn Signal / Brake Light

Note: When installing set screws, do not over tighten. You will damage the bezel. Hand tighten and use small amount of red Loctite only.

That's it for the install tips!
Please refer to our EZ Light wiring diagram
below for wiring values...

To simplify your installation, we recommend you use a Bagger Nation “Light Install Kit”

P/N PYO:BLIK-14L (2014-Later)

P/N PYO:BLIK-10 (2010-2013) & PYO:LE-03-SR (Load Equalizer Required)

P/N PYO:BLIK (Load Equalizer Required)

P/N PYO:BLIK-CVO (2009-2013 CVO) & PYO:LE-03-SRCVO (Load Equalizer Required)

Note: DO NOT use white wire of light and DO NOT use the (Blue/Red) brake circuit of your motorcycle.

2014 & Later BCM Calibration: With everything installed and all fastened, the BCM (Body Control Module) must be told you have installed new LEDs or calibrated.

First, try this simple technique to adjust the load on your new signals.

1. Turn ignition on (first position)
2. Push the Hazard button in to activate the Hazards
3. Turn the ignition to the (OFF position). The Hazards should continue to blink.
4. Let the Hazards blink for approximately 5 minutes.
5. Turn the ignition back on (first position), deactivate the hazards.
6. Turn ignition off.
7. Turn ignition on and test the turn signals/brake lights.

If they are functioning normally, you are all set. If they do not function properly, then you will need to bring the bike down to your local Harley-Davidson dealer to adjust your bike with their computer. In either case, You MUST recalibrate the BCM (Body Control Module)

Note: Flashing of BCM will use turn signal circuit for turn signal and brake light functions Description of Operation Running Lights: Applying +12VDC to Blue wire will turn on all LEDs to medium intensity.

Brake Lights: Applying +12VDC to RED wire when brakes are applied to assure visibility and safety. If you're installing the LED Lights in your saddlebags, we have included a set quick detach plugs (Deutsch), which allows a quick disconnect function for easy saddlebags/tour-pak removal to clean or service your bike.

Wiring Color Code

BIKE WIRING

black



blue



blue/red



blue/brown



blue/violet



LIGHT WIRING

black



blue



red



White (not used)



BLIK WIRING

black - ground



blue - tail lamp



red



blue / brown - right turn



blue / violet - left turn



red/yellow (not used)



orange/white (not used)



Stock wiring (No Light install kit)

LEFT LIGHT

Red on light → Blue/Violet (Left) on bike

Blue → Blue Black → Black

Right Light (Red) on light → Blue/Brown (Right) on bike

Blue → Blue Black → Black

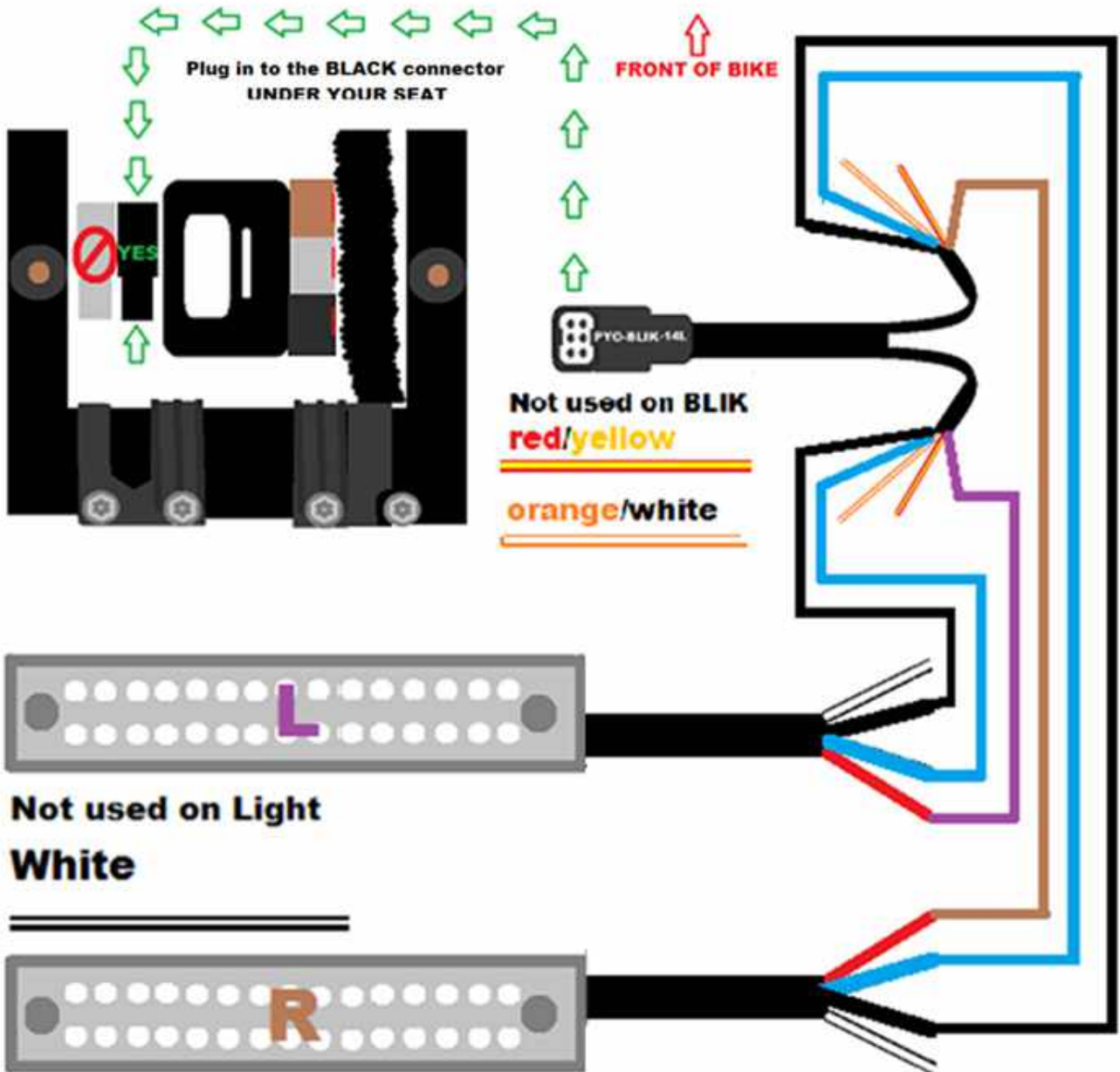
DON'T use White wire on light!

Harley Davidson must "FLASH" the bike BCM to "CVO lights out"

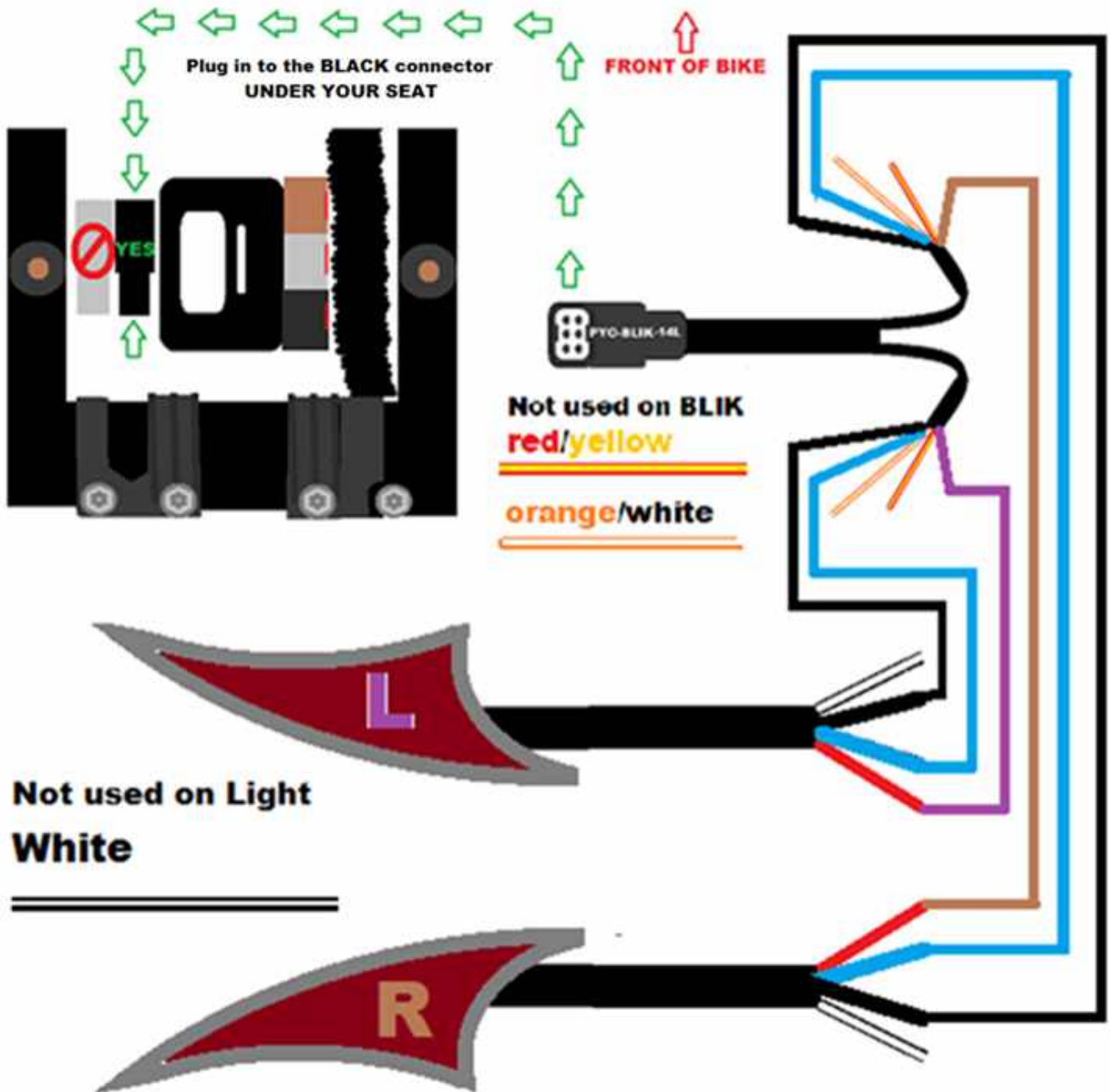
Do not use Blue/Red & Red/Yellow of "bike" wiring.

NOTE: Do not TAP in to GRAY 4 pin connector under the seat (This is for the Fuel system!)

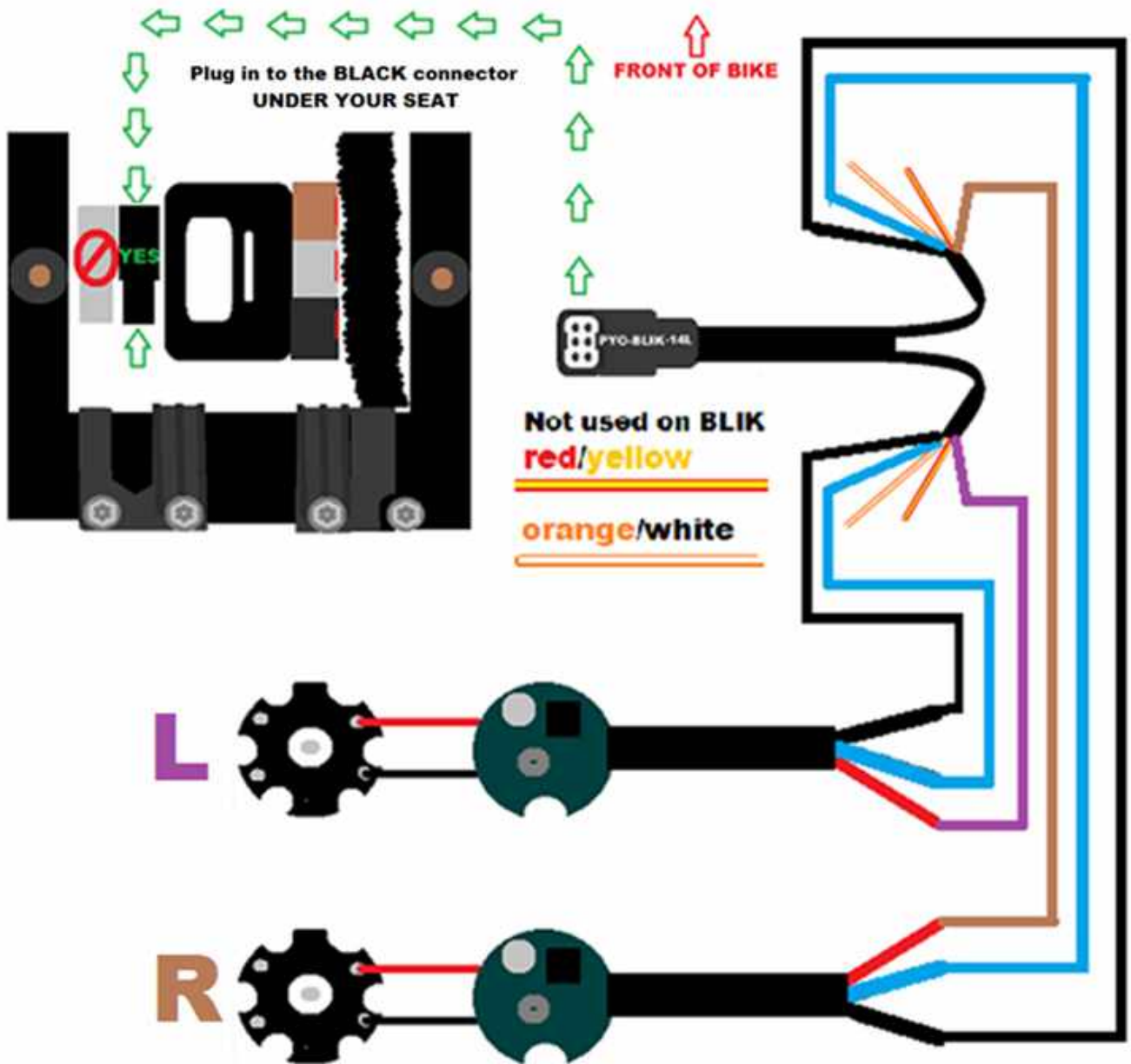
EZ Light, & Bagger Dagger Light Wiring Diagram



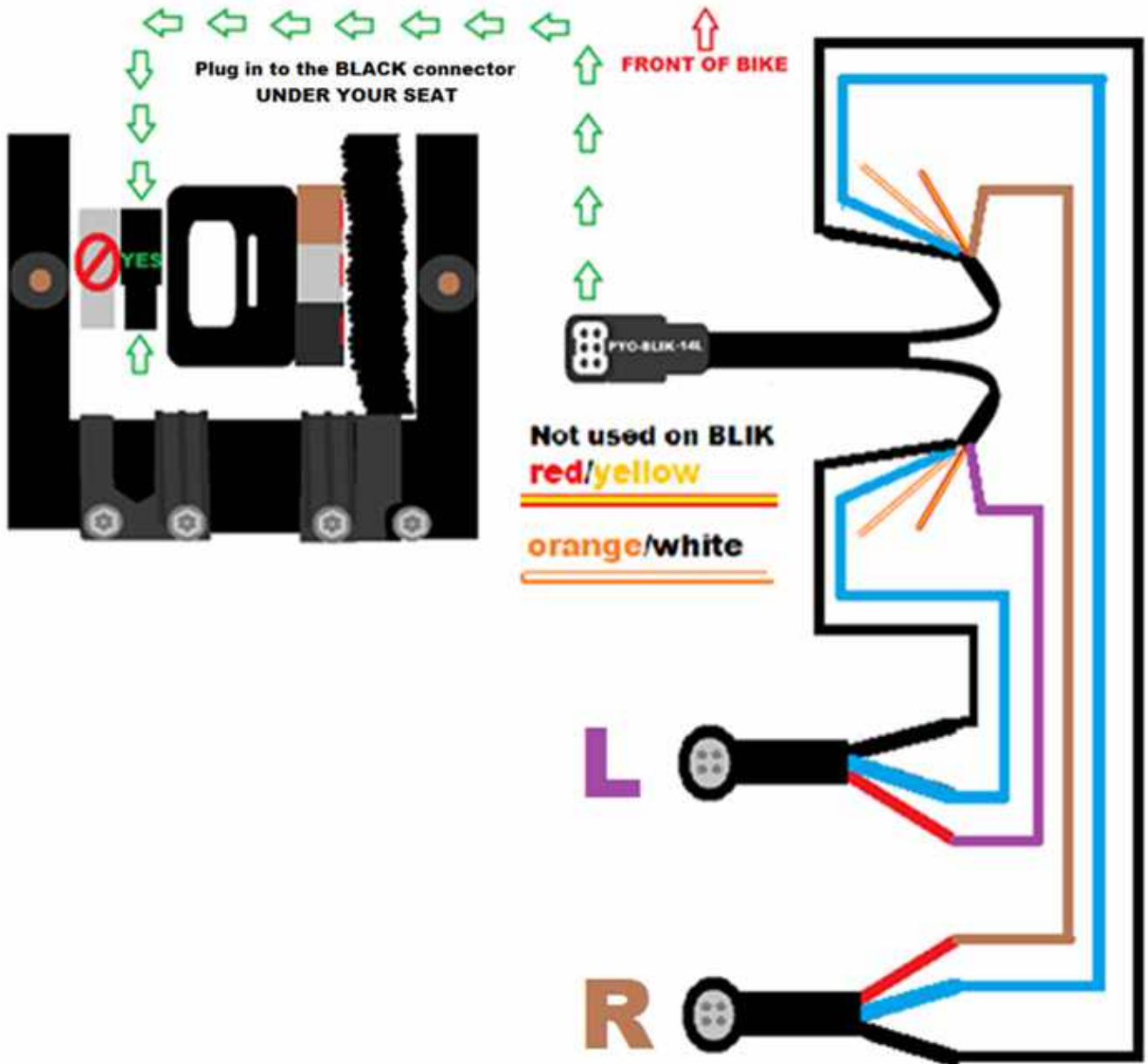
Wedgy Light Wiring Diagram



Super Bright LEDs Light Wiring Diagram



Lightning Bolts/Lightning Bullet Light Wiring Diagram



Tips & Tricks

for wiring multiple LED's securely

1. Plot out where you are installing your new Bagger Nation Lighting bolts. With endless possibilities, remember the golden rule! Measure twice & cut once.



2. Heat-shrink all the way up on to the stem of the light. Is clean and extra protection.



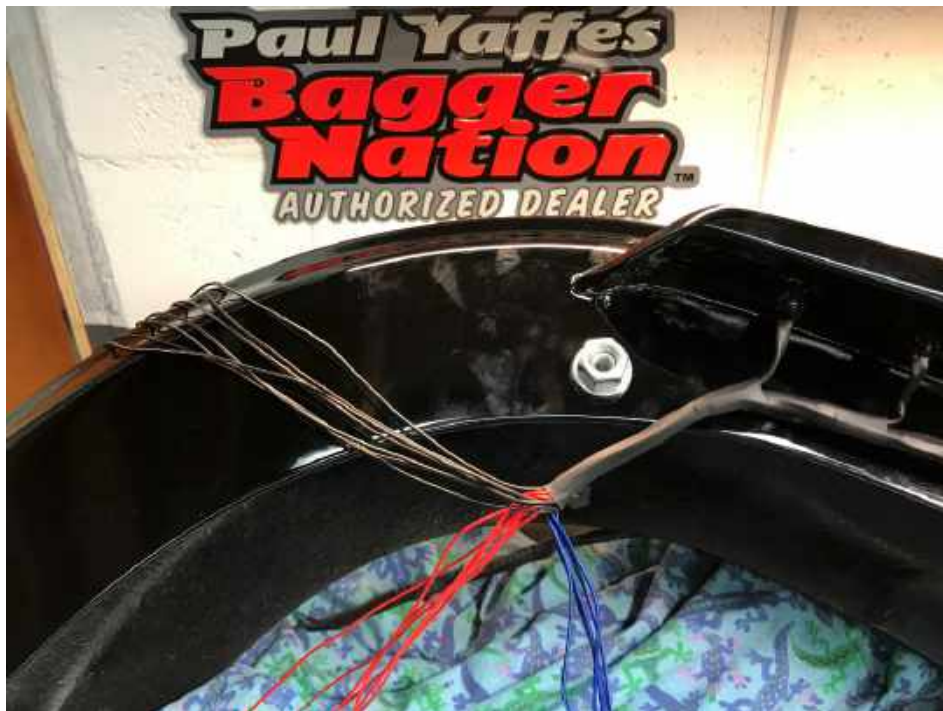
3. Heat-shrink over the stem of the Lighting Bolt and give yourself a few inches just for proper coverage/ extra protection, and it looks clean.



4. Cut some sleeves of larger heat-shrink sections to run your looms together, starting with 2. Shrink them together. Next, take those two and to add the next light in sequence, heat-shrink them together, and continue on till you have a nice tight, and secure wire loom.



5. Lastly, separate the wire colors and wire it up to your Bagger Nation Light Install kit and plug it in.





Thank you for choosing Paul Yaffe's Bagger Nation.
Now go enjoy your ride, and if you need anything further for your bike,
please let us help.

Paul Yaffe's
Bagger
Nation™

602.840.4205
BAGGERNATION.COM