

# STEALTH

LICENSE FRAME

## 2023 CVO LICENSE PLATE FRAME INSTALL



  
**Paul Yaffe Originals™**  
DESIGN & DEVELOPMENT  
EST. 1991

HOME  
*of*

**Paul Yaffe's  
Bagger  
Nation**

**TO START REMOVE THE WIRE CONNECTOR PROTECTIVE COVER UNDER REAR FENDER BEHIND LICENSE PLATE LIGHT FIXTURE.**



**POP CONNECTOR LOOSE FROM THE HOLD DOWN CLIPS & DISCONNECT CONNECTOR.**



**REMOVE THE TWO MOUNTING SCREWS FROM LIGHT FIXTURE PLATE.**

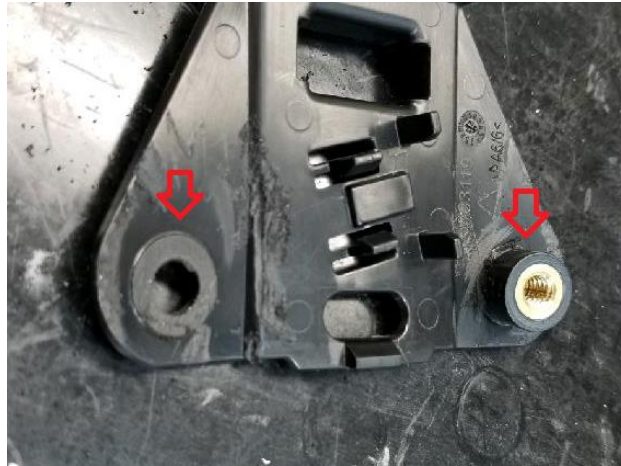


**PULL WIRE THROUGH THE WINDOW IN FENDER.**



**PUSH CLIPS INTO FENDER + REMOVE COVER BASE FROM FENDER.**

**THE BRASS THREADED BUNGS ON BASE MUST BE REMOVED.**



**CUT THE PLASTIC AROUND INSERT AT THE BOTTOM & REMOVE INSERT.**

**CLEAN UP CUT AREA & SMOOTH OUT ANY UNEVEN SURFACE. SNIP OFF TIPS OF HOLDER CLIPS THAT PROTRUDE THROUGH FENDER.**



**INSTALL YOUR LICENSE PLATE IN FRAME, TRIM YOUR LICENSE PLATE AS NEEDED.**

**NOTE: EACH STATES MC LICENSE PLATE IS SLIGHTLY DIFFERENT.**

\*IT IS COMMON TO NEED TO TRIM YOUR PLATE EDGES SLIGHTLY TO ALLOW IT TO SEAT IN THE RECESSED POCKET IN THE PLATE FRAME. A TIN SNIP OR GOOD STRONG SCISSORS MAKES EASY WORK OF THIS.

**NOTE: WHEN INSTALLING YOUR LICENSE PLATE INTO OUR FRAME YOU HAVE THE OPTION OF YOUR LIGHT STRIP BEING ON *TOP* OR ON THE *BOTTOM* OF THE PLATE. JUST SWITCH YOUR WIRES & GROMMET TO THE CORRESPONDING EXIT HOLE.**

\*BEFORE YOU REMOVE WIRE CONNECTOR FROM YOUR STOCK LIGHT & INSTALL ON YOUR NEW LIGHT *MARK THE WIRE LOCATION BEFORE REMOVING*. MUST REUSE STOCK CONNECTOR. THE TERMINALS PROVIDED ARE FOR THIS CONNECTOR.

**ONCE YOU HAVE DECIDED, YOU WILL NEED TO TRIM A NOTCH IN THE PLATE TO CLEARANCE THE LIGHT WIRES. AFTER YOU HAVE COMPLETED THESE STEPS, REASSEMBEL THE STEALTH III LICENSE PLATE HOLDER USING ALL THE SMALL PHILLIPS HEAD SCREWS THAT WERE REMOVED.**



**MAKE SURE THE LIGHT WIRE IS NOT PINCHED!**

**ASSEMBLE WITH SCREWS, THEN ADD THE FOAM PAD THAT'S SUPPLIED.**

**YOU ARE READY TO INSTALL PULL WIRE THROUGH THE FENDER & BACKPLATE.**

**RECONNECT WIRE CONNECTOR AND PUSH WIRE BACK THRU HOLE & INSTALL WITH THE FLANGE BOLTS PROVIDED. USE A SMALL AMOUNT OF **BLUE** *LOCTITE*.**



**TEST LIGHT BEFORE YOU INSTALL THE COVER.**

**SNAP CONNECTOR BACK IN PLACE & TUCK THE WIRE UNDER COVER & SNAP BACK IN PLACE**



# ENJOY YOUR RIDE!

  
**Paul Yaffe Originals™**  
DESIGN & DEVELOPMENT  
EST. 1991

HOME  
*of*

**Paul Yaffe's**  
**Bagger**  
**Nation**